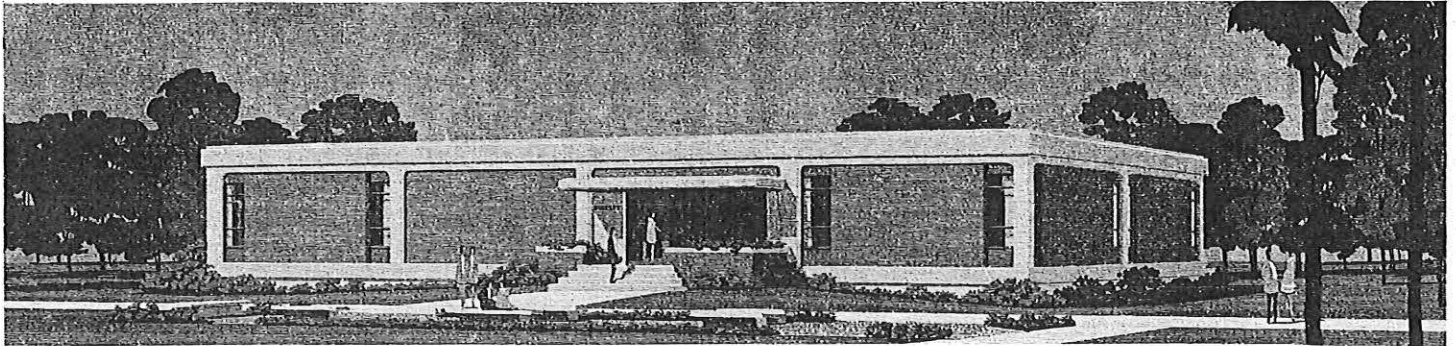


NOT TO BE TAKEN FROM LIBRARY



# COVENANT SEMINARY NEWSLETTER

VOL. 6, NO. 1  
WINTER, 1974



*An artist's conception of the architect's plans for the new library-learning center.*

## CHALLENGE GIFT SPURS LIBRARY BUILDING PROGRAM

At its annual winter meeting at the seminary, January 10 and 11, the board of trustees heard the exciting announcement from Dr. Rayburn and Mr. Palmer that an anonymous donor had promised the seminary \$100,000 for the new library-learning center during this calendar year if the seminary can raise an additional \$100,000 to match the gift. This great incentive came at the beginning of the seminary's special fund-raising effort in behalf of the library building which is such a vital need on the campus at the present time.

The library-learning center building is simply the first of a number of additions which are included in a revised Master Plan for Covenant Theological Seminary which was presented to the board by St. Louis architect Earl Fey, who has been working closely with faculty and administration in preparing plans for the necessary expansion of seminary facilities. Covenant Seminary has a goal of enlarging its offerings to provide an expanded program of theological studies for a larger student body. Its present students tax the capacity of its present buildings so the trustees have faced the necessity of an enlargement of its facilities.

When Covenant Seminary was granted its full regional accreditation a year ago, the examining team made it clear that library expansion should be given top priority. The present library houses approxi-

mately 25,000 volumes and is filled nearly to capacity. The new library is to accommodate at least 100,000 volumes as well as much better study space, a closed reserve section and other features in addition to seminar rooms and an audio-visual room.

A chapel which is also included in the Master Plan will be the next building to be planned and built on the campus after the library is completed. Ultimately a new classroom building and a new administration building will be added.

The library building was originally planned as "Project 75" when the board of trustees set as their goal the completion of this important facility fully paid for by the fall of 1975. With the large incentive gift offered, the administration feels that it is still "on schedule" in this program. However, President Rayburn has emphasized that the intensive effort to raise the matching funds for the larger gift offered and to reach the ultimate goal of the estimated cost of \$400,000 for the library building must not divert funds from the regular monthly support of the school. Unless this support can be maintained at its present level and even increased somewhat the seminary would face serious financial difficulty.

Regular supporters of the seminary are urged to join the faculty, administration, and students in thanking God for the large incentive gift. Those who are able to respond to this challenge over and above their regular gifts to the seminary are urged to prayerfully consider a substantial capital gift.